

LEUCOS

Across
time we
reinvent

Novelties - 2025

You spot it from afar.

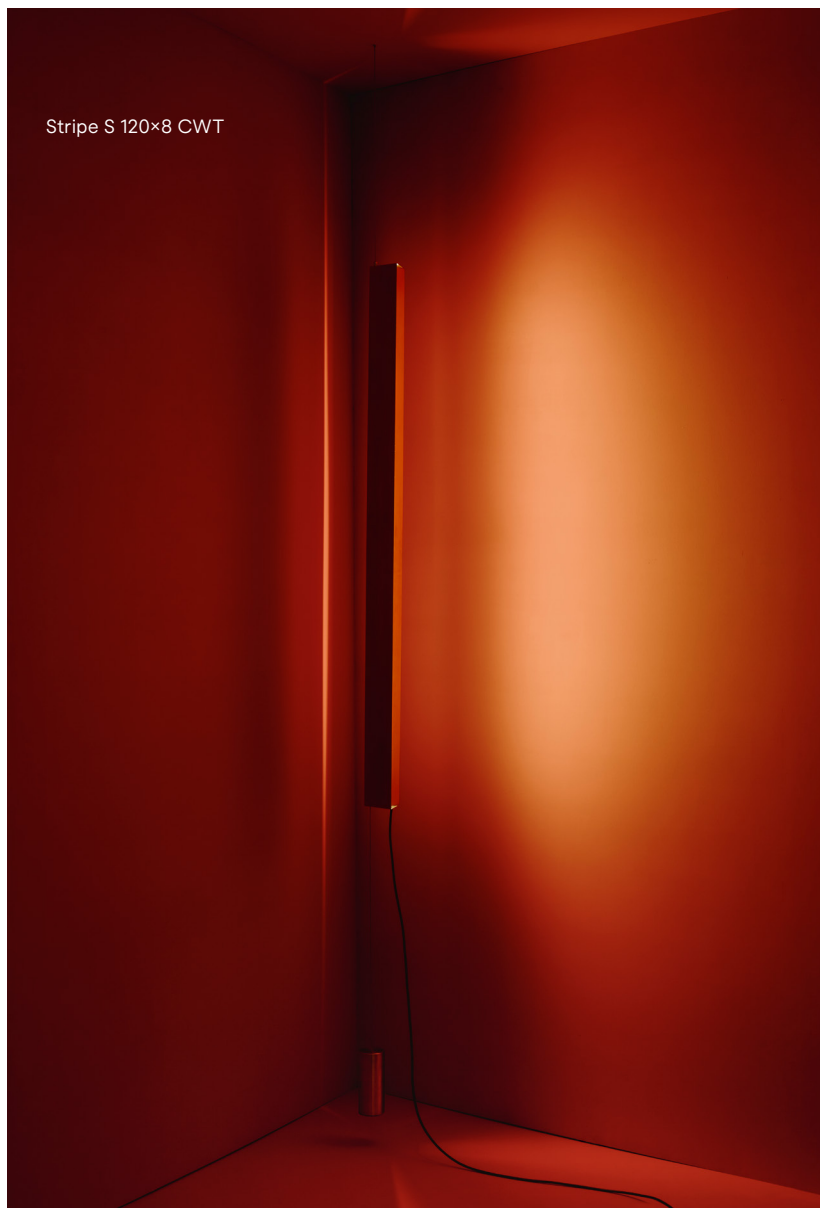
Stripe

Design
Mayice Studio



Across time we reinvent

Stripe S 120×8 CWT



Type: Pendant

Dimensions:

- Stripe S 120 CWT
- L 120cm - Depth 7-12cm / L 47 1/4"-
Depth 2 3/4"- 4 3/4"

Materials: Brushed stainless steel or
metal with painted finishing

Light source: Integrated LED
2700K or 3000K CRI≥90

Control: Dimmer on cord

Note: Rotatable and height-adjustable
diffuser



You spot it from afar.

Stripe

Design
Mayice Studio

Stripe is the first lamp designed by Mayice Studio for LEUCOS and the brand's first-ever metal collection. Its minimal volume, with a diamond-shaped section, encapsulates hidden light and rotates on itself. In the pendant CWT version, the metal body moves up and down and rotates, enhancing interaction and flexibility.

Available in brushed stainless steel or painted metal, Stripe diffuses light in multiple directions, generating luminous lines in space.

The collection includes pendant CWT, pendant, wall/ceiling, and floor versions.

Stripe S 120×8 CWT



Across time we reinvent

Type: Floor

Dimensions:

- Stripe TR 120x15

H 120cm - Depth 22 x13cm / H 47" Depth
8 5/8"x 5 1/8"

Base Ø40cm / Ø 15 3/4"

- Stripe TR 180x15

H 180cm - Depth 22x13cm /

H 70" Depth 8 5/8"x 5 1/8"

Base Ø40cm / Ø 15 3/4"

Materials: Brushed stainless steel or metal
with painted finishing

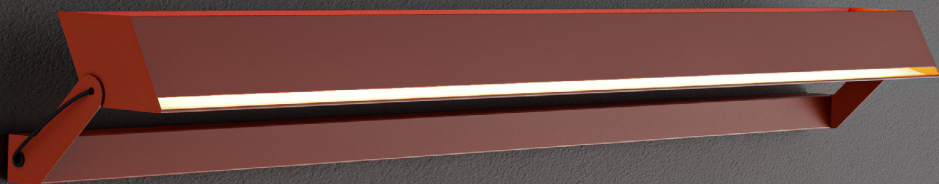
Light source: integrated LED
2700K or 3000K CRI≥90

Control: Dimmer on cord



Stripe TR 180x15

Stripe P-PL 90×8



Type: Wall/Ceiling

Dimensions:

- Stripe P-PL 90×8
L 90cm – Depth 11-13cm / L 35 3/8" –
Depth 4 3/8-5 1/8"
- Stripe P-PL 120×8
L 120cm – Depth 11-13cm / L 47 1/4" –
Depth 4 3/8-5 1/8"

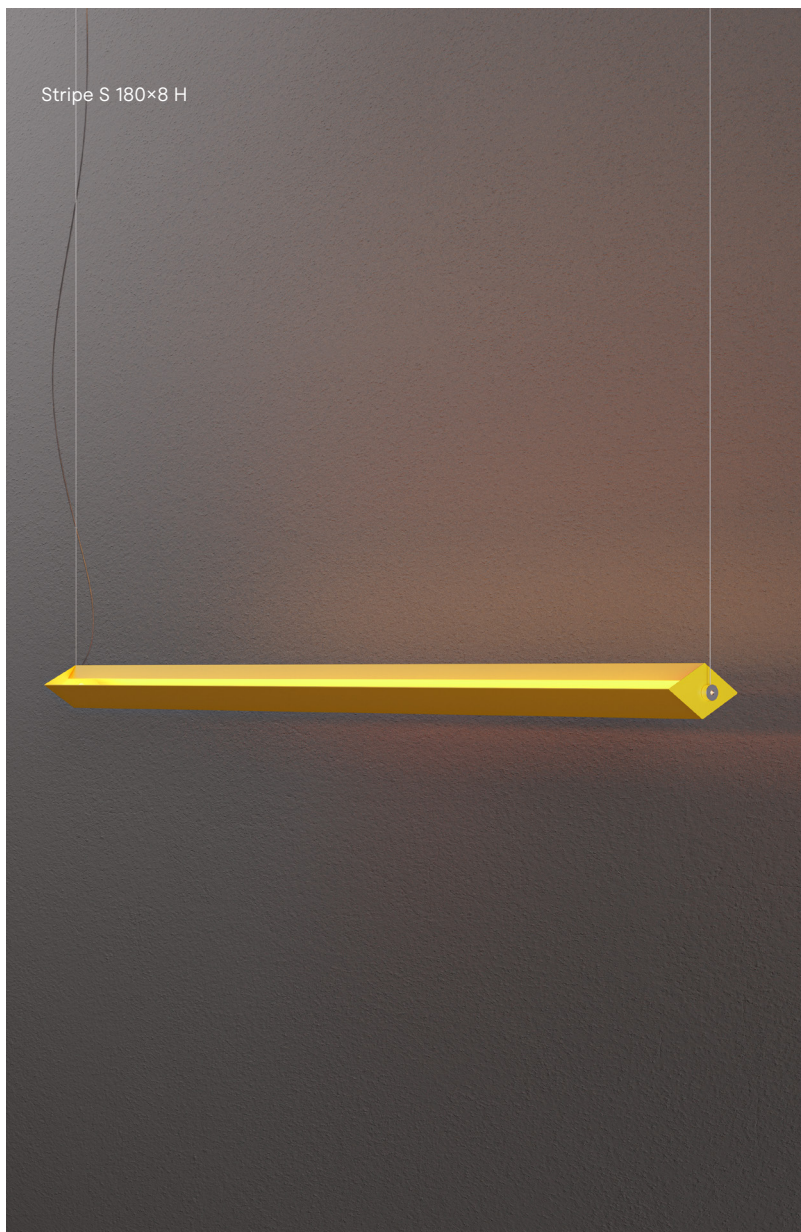
Materials: Metal with painted finishing

Light source: integrated LED

2700K or 3000K CRI≥90

Control: Push-dim; 0/1-10V, DALI2

Note: Rotatable diffuser



Type: Pendant

Dimensions:

L 180cm - Depth 7-12cm / L 70 7/8"-
Depth 2 3/4" - 4 3/4"

Materials: Metal with painted finishing

Light source: integrated LED

2700K or 3000K CRI≥90

Control: Push-dim; 0/1-10V, DALI2

Note: Rotatable diffuser

Gill

Design
Roberto Pamio



Gill P-PL 28



Gill P-PL 40

Type: Wall/Ceiling

Dimensions:

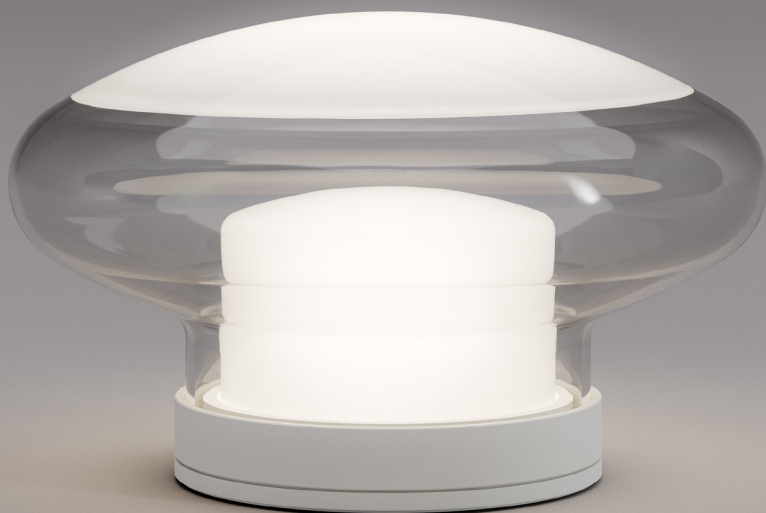
- Gill P-PL 40
Ø40cm - Depth 19,6cm / Ø15 3/4" - Depth 7 3/4"
- Gill P-PL 28
Ø28cm - Depth 15cm / Ø11" - Depth 5 7/8"

Materials: Blown glass / Metal with painted finishing

Light source: G9 LED bulb

Gill

Design
Roberto Pamio



Gill T 28

Type: Table

Dimensions:

- Gill T 40

Ø40cm - H 20,3cm / Ø15 3/4" - H 7"

Base Ø15,8cm / Ø6 1/4"

- Gill T 28

Ø28cm - H 15,7cm / Ø11" - H 6 1/8"

Base Ø15,8cm / Ø6 1/4"

Materials: Blown glass / Metal with painted finishing

Light source: G9 LED bulb

OR1

Design
Patrick Jouin



OR1 P-PL

Type: Wall/Ceiling

Dimensions: 48cm x 41,5cm - Depth 10cm
18 7/8" x 16 3/8" - Depth 4"

Materials: Liquid-painted polyurethane

Light source: Integrated LED
2700K or 3000K CRI≥90

Control: Push-dim; 0/1-10V, DALI2

Note: Also with plug-in version

OR2

Design
Patrick Jouin



OR2 P-PL

Type: Wall/Ceiling

Dimensions: 60cm x 70,5cm - Depth 10cm
23 5/8" x 27 3/4" - Depth 4"

Materials: Liquid-painted polyurethane

Light source: Integrated LED
2700K or 3000K CRI≥90

Control: Push-dim; 0/1-10V, DALI2

Note: Also with plug-in version

Stacking

Design
David Rockwell

Stacking P-PL 60



Stacking P-PL 30



Type: Wall/Ceiling

Dimensions:

- Stacking P-PL 30
Ø10cm H 32cm - Depth 14cm
Ø4" H 12 5/8" - Depth 5"
- Stacking P-PL 60
Ø10cm H 62cm - Depth 14cm
Ø4" H 24 3/8" - Depth 5 1/2"

Materials: Blown borosilicate glass /
Anodized or painted aluminum

Light source: Integrated LED
2700K or 3000K CRI≥90

Control: Push-dim; 0/1-10V

Note: Also with plug-in version

Stacking

Design
David Rockwell

Stacking P-PL 30

Stacking P-PL 60

Type: Wall/Ceiling

Dimensions:

- Stacking P-PL 30
Ø10cm H 32cm - Depth 14cm /
Ø4" H 12 5/8" - Depth 5 1/2"
- Stacking P-PL 60
Ø10cm H 62cm - Depth 14cm /
Ø4" H 24 3/8" - Depth 5 1/2"

Materials: Blown borosilicate glass /
Anodized or painted aluminum

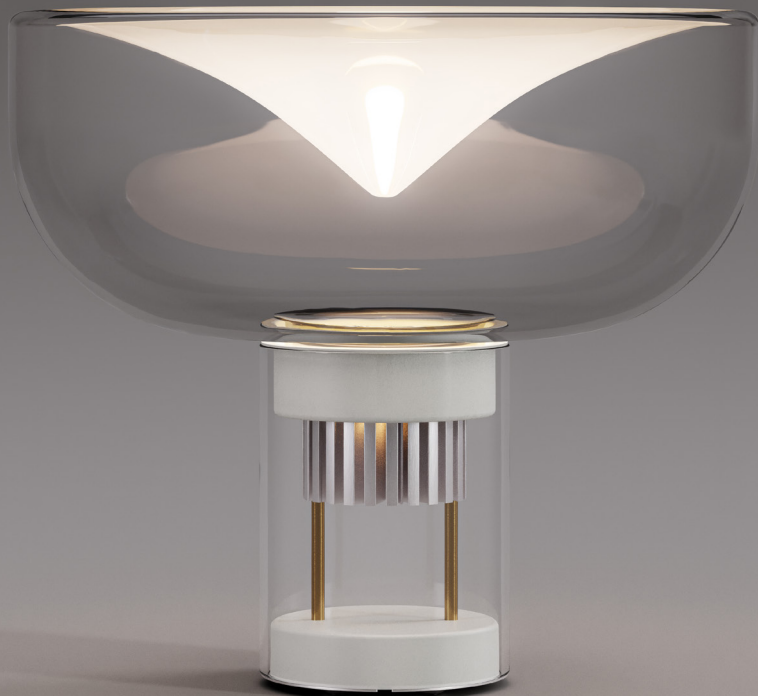
Light source: integrated LED
2700K or 3000K CRI≥90

Control: Push-dim; 0/1-10V

Note: Also with plug-in version

Aella Openworked

Design
Toso & Massari



Aella T 45 Openworked

Type: table

Dimensions:

Ø45cm H 40cm / Ø17 3/4" H 15 3/4"

Base Ø15cm / Ø5 7/8"

Materials: Blown glass / Metal with painted finishing and natural copper rods

Base: Blown borosilicate glass

Light source: Integrated LED 2700K or 3000K CRI≥90

Control: Dimmer on cord

Ether

Design
Patrick Jouin



Ether S 90 SQ

Type: Pendant

Dimensions:

- Ether S 90 SQ

70×70cm H 90cm - 27 1/2"×27 1/2" -

H 35 3/8"

- Ether S 150 SQ

70×70cm H 150cm - 27 1/2"×27 1/2" -

H 59"

Materials: Blown borosilicate glass / Metal
with painted finishing

Light source: Integrated LED 2700K or
3000K CRI≥90

Control: Push-dim; 0/1-10V, DALI2

Note: Also available in round version and
custom sizes

Over sixty years of lighting history



LEUCOS was born in 1962 near Venice, where craftsmanship is synonymous with art. Since the beginning, we have been known for creating lamps of unmistakable quality and unparalleled beauty.

The handblown glass represents the local tradition, but behind every new project, there is a broader ambition. Rooted in a solid industrial heritage, from photography with MANFROTTO to retail design with ALU, we reinvent across time. With a deep passion for timeless beauty, we are continuously driven to innovate and elevate our modern classics.



leucos.com

LEUCOS SRL

Via del Commercio, 22
36060 Romano d'Ezzelino
(Vicenza) Italy
info.it@leucos.com

LEUCOS USA INC.

6 Kilmer Rd Suite B
Edison, NJ 08817
USA
info.us@leucos.com

